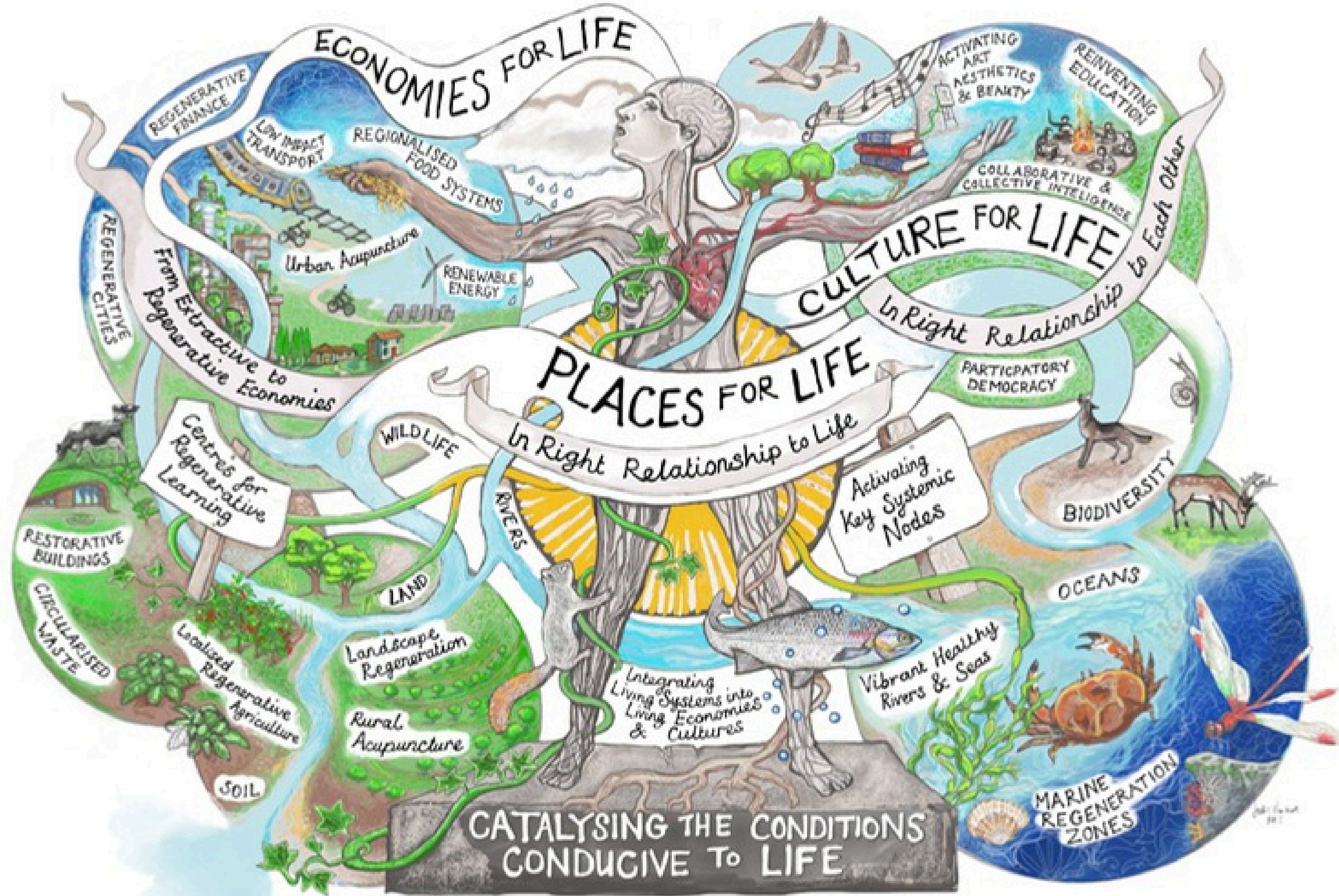


# PLACES FOR LIFE.

Capability Building for Place-based Regenerative Economies,  
Cultures and Innovation Ecosystems.

Our live, in-person capability building experiences from our internationally acclaimed online programme, Power of Place.





# WHO WE ARE.

We are a collective of regenerative practitioners and capability builders who create the enabling conditions for place-sourced community-led regenerative futures.

Founded by Jenny Andersson in 2019, Really Regenerative CIC has supported organisations, individuals and communities to develop transformative projects that create the conditions conducive to life around the UK, Europe, south east Asia, south America, USA, Canada.

We are regenerative designers, economic shapers, content creators, researcher/innovators, educators, resources and earth tenders - roles which support the creation of regenerative societies.

We particularly focus on three zones of work:

- developing the relationship between urban environments and the bioregions they are nested in
- developing Centres For Life - place-sourced regenerative innovation cultures, projects and systems that support the emergence of the economies of the future
- creating right relationship relational cultures, practices and social infrastructures that hold social cohesion together during times of rupture and transformation

THE REALLY REGENERATIVE CENTRE CIC



# WHAT WE DO.

## Capability & Field Building across the fractals of place.

Really Regenerative CIC *resources* the development of the regenerative fPLACES FOR LIFE buildig capability, knowledge and innovative projects which strengthen future resilience.

Future building through place-based innovation projects and ecosystems.

Capability building through learning journeys

Field building through community, research, storytelling & dissemination.

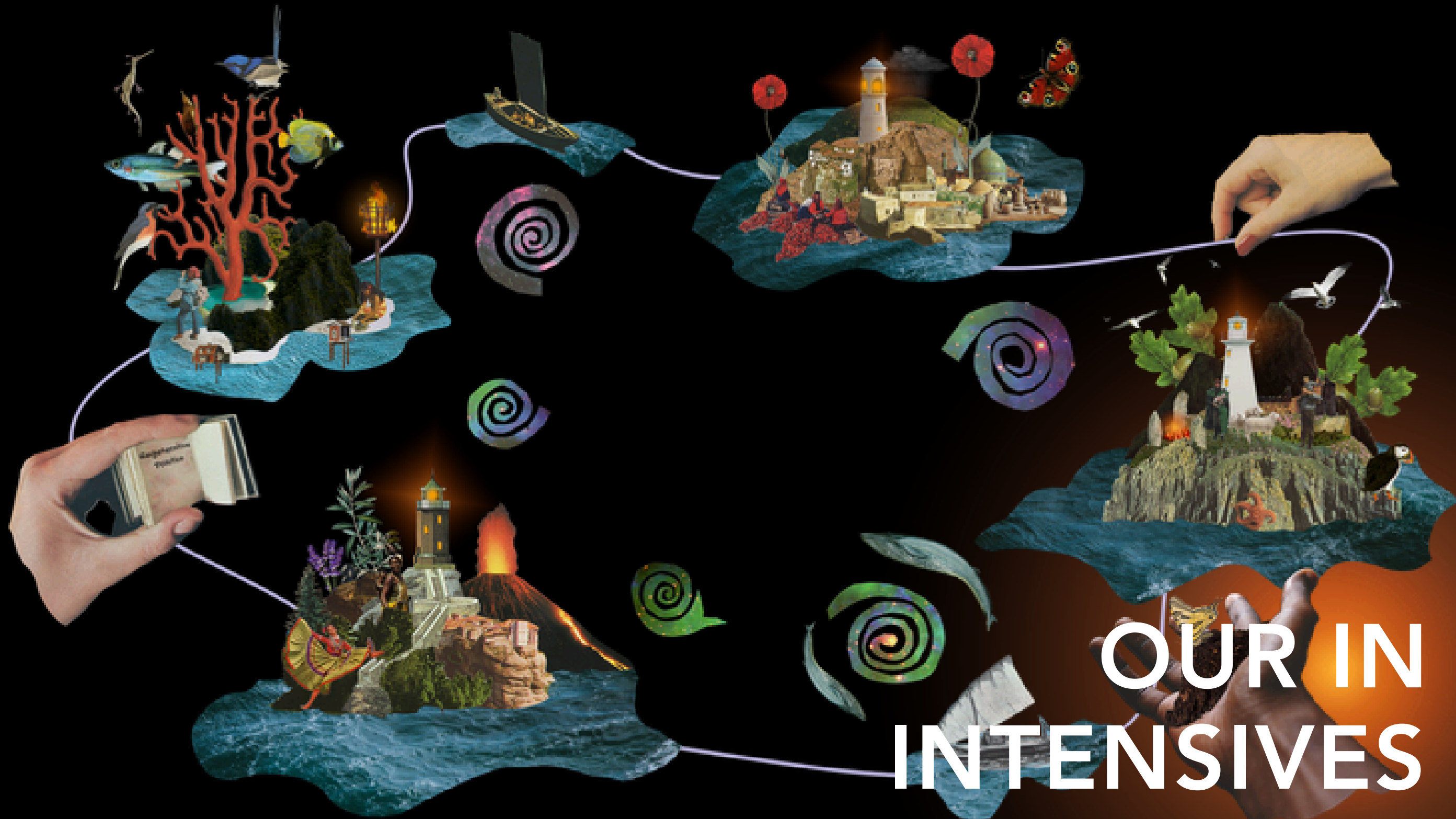
We already resource some place-based institutions and communities who want to develop significant systemic change.

We want to be able to invest time in specific UK locations to develop regenerative innovation ecosystems where funds and mindsets are ready-to-act and transform and where they are not to develop governance, collaboration and funding mechanisms.

We build capability through our recognised learning journeys but we need to democratise access to them through philanthropic funding to access more organisations and people across the social spectrum.

We continue to awaken new fields and enable the continuance of will in existing fields through our field building work. This is research, storytelling and dissemination work which is vital but currently under-funded.





**OUR IN PERSON  
INTENSIVES IN 2026.**  
Islands of coherence.

# PLACES FOR LIFE PROGRAMMES.

## WHO ARE THEY FOR?

Organisations who are ready to develop a regenerative role in the evolution of the ecological, economic and cultural systems in which they are embedded.

Our 2025 study Enabling Conditions for Place-based Community-Led Regeneration clearly identified that there are different levels of systemic readiness to build the enabling conditions for future resilience across these systems. The first step is becoming aware of, and accepting, that we are in a time of rupture and transition in which the status quo needs to be challenged and new responses, new alliances, new capabilities that are commensurate with the demands of the polycrisis need to be built.

Organisations who want to build future-fit leadership capabilities for senior and emergent talent to:

- **dance elegantly and confidently with uncertainty and work with emergence** - and help others to do the same
- **image into different futures**, understand how systems could unfold differently in ways we have not before imagined
- **create cultures** of deep **trust, confidence, courage and collaboration** that can stand strong against the prevailing winds of **reductionism, authoritarianism and polarisation**
- convene multi-disciplinary, multi-stakeholder, inter-generational communities who can come together and stay together for the long haul of transformative change.



# PLACES FOR LIFE - EVOLUTIONARY POTENTIAL OF PLACE.

A 3.5 DAY RESIDENTIAL INTENSIVE

## The Capabilities Your Team Will Build

- How to identify the evolutionary potential of your 'place'
- How to map and understand the underlying dynamics of separation in your 'place' and their impacts
- How to design programmes that create ripple effects across the different nested systems in which you are situated for maximum regenerative effect and impact
- How to design and implement regenerative culture and practice
- Why and how working with evolutionary potential creates transformative change beyond problem-solving.

## Additionally, they will:-

- gain an introductory understanding of the 7 foundational living systems design principles for Places For Life
- build understanding and capability in pattern literacy, framework thinking for creative innovation
- go away with practical ideas and processes they can implement immediately to catalyse the process of transformative change
- develop and practice collaborative co-mutual relationality

THE REALLY REGENERATIVE CENTRE CIC





# RRCIC LEARNING JOURNEYS



# PLACES FOR LIFE - DESIGNING SYSTEMS EVOLUTION.

A 3.5 DAY RESIDENTIAL INTENSIVE

## The Capabilities Your Team Will Build

- How to design long-term complex programmes that realise the regenerative potential of your Place
- Understand the role of Centres For Life and Regenerative Innovation Systems in creating Places For Life
- Understand how to shape regenerative developmental cultures, including social infrastructure such as communities of place & practice
- How to identify critical systemic nodal acupuncture points for transformative change in both urban and bioregional contexts

## Additionally, they will:-

- gain an in-depth understanding of the foundational living systems design principle Nodal Acupuncture (for Transformative Change)
- learn from place-based transformative projects from around the world that Really Regenerative has supported including food systems, urban culture, urban regenerative enterprise programmes
- build understanding and capability in framework thinking for creative innovation
- go away with practical ideas and processes they can implement immediately to catalyse the process of transformative change

THE REALLY REGENERATIVE CENTRE CIC



*"Challenging, intensive, eye-opening sensemaking of complexity, metaphors that I could understand and relate to, and more importantly communicate myself."*  
Sustainability Director, Natural England

*"I was blown away by the feedback after the intensive and really encouraged by the effect of an in-person intensive process. on rapid capability building."*  
Alicia Carey, CEO, Hawkwood College

*"I was surprised by how much inner work I did, and how much I had to do. Understanding how much the story of separation had impacted my own life and in my work was really helpful. Looking at potential rather than problems in every programme of work is having real impact on how I work. I now have a process that is in line with bioregional design and place-based health that is an important part of my work."*

Katharine Beer, Business Development, Experience Sussex.

*"It's been a phenomenal journey - The practical ripples are far too numerous to count."*

India Hamilton, regenerative entrepreneur, founder of SCOOP and Hypha Consulting, Jersey

*"There was a before Power of Place me, and an after Power of Place me."*  
Elodie Rousselot, Strategy Director, Hanzo.

*"Power of Place and regenerative design gave us a whole new language and way of working together in a complex multistakeholder environment that we didn't know was possible."*

Aase Höjlund Nielsen, Project Director, DESIRE, New European Bauhaus

*"On a professional level I have increased confidence and energy to carry on with this path. I feel less afraid to do things, try out methodologies, frameworks, embodied knowledge and see what happens. The power of embodied learning, connecting with heart and hands as part of the learning process."*  
Ana Magdalena Rivera Nahrwold, Director, Bosque Frio, Chile

*"This course made my year. It was an incredible journey. I loved the tools it gave me to create regenerative potential, work on systems and to engage stakeholders well. I felt the focus on the self was really important. I learned so much from everyone on the programme. I would recommend it to anyone wanting to engage their community with regenerative design. It gave me space for the thinking needed."*

Jessica McQuade, WWF

*"I felt really privileged to have had this experience - the knowledge and inspiration I gained during the Power of Place learning journey is making a real difference as I apply this to my projects in Malaysia."*  
Sharmini Nagulan, CEO Regeneration Hub, Kuala Lumpur

*"The course gave me new language and principles which fitted on foundations I had, and the confidence to be bolder when I have opportunities to speak to people or groups of people. It's not about foisting anything onto others, it feels like offering a perspective which they can take if they like it. I have had feedback in the last year that my words or actions have inspired people, more than any other time of my life. This is amazing - I don't seek it for adulation, but it feels like I can make more difference and that gives me more purpose."*  
Phil Holden, Shropshire Hills National Landscape

# What participants have said.

# PLACES FOR LIFE - THE RELATIONAL EDGE.

## A 3.5 DAY RESIDENTIAL INTENSIVE

### The Capabilities Your Team Will Build

- Key principles and practice for Regenerative & Right Relationship
- How to convene fields of energy in across multiple stakeholders
- How to design and implement regenerative culture and practice
- How to design and embed regenerative social infrastructure that keeps regenerative culture fresh, active and emergent
- How to use participatory inquiry as culture-building
- How to effectively make room for relationship-before-task and why it adds transformative value
- How to work effectively with resistance, dissent, disagreement, fear and anger

### Additionally, they will:-

- gain an in-depth understanding of the foundational living systems design principle Vitalise Fields of Energy (for Transformative Change)
- build understanding and capability in framework thinking for creative innovation
- go away with practical ideas and processes they can implement immediately to catalyse the process of transformative change
- develop and practice collaborative co-mutual relationality



# PLACES FOR LIFE PROGRAMMES.

## FREQUENTLY ASKED QUESTIONS.

### How can we join one of these programmes?

Unlike our online open learning journeys, these programmes are for place-based organisations who want to commission and in-house learning and development programme in regenerative design. We will customise content to your specific stage of readiness and needs in a consultative pre-intensive process.

### If we are an association or membership organisation, can we co-host a programme with you for our membership?

Yes we would be delighted to welcome membership organisations. One of our first pilot programmes was with the National Landscapes Association in the UK who brought together up-and-coming leaders from their different landscapes.

### How many people can join a programme?

We can discuss this in our initial consultation. We recommend groups of between 12 min-50 max.

### Who leads and participates in the programme from Really Regenerative?

Each programme has a programme leader who is supported by the appropriate number of regenerative resources who support individuals and groups during the intensive. We bring one regenerative resource to support group work for each 10 people who participate. Programmes are lead by Jenny Andersson and Dr Al Mathers.

### What are the options for venues?

Luckily there are many wonderful venues across Europe that have energy and power to host transformative gatherings all of which have different facilities, energy and cost. We will work with you to find the right one. We have worked with Hawkwood College in Stroud, Falkland Estate in Fife, Santuari de Lluc in Mallorca, a privately owned farm in northern Denmark.

**What additional capabilities will our participants need to work on after these intensives? How will their development be on-going? Will they leave with capabilities they can implement with immediately?**

There will be many practices they can implement immediately. But regenerative learning is by its nature an ongoing process that never ends. We would be happy to discuss an ongoing support programme for you at any time.

### What do these programmes cost?

Each programme is tailored to your specific needs. The investment will depend on the number of people you want to bring and the location we choose together.

some of our previous locations





**CONNECT WITH US FOR  
A CONVERSATION  
ABOUT HOW WE CAN  
HELP YOU REGENERATE  
THE FUTURE.**

Jenny Andersson  
[jenny@reallyregenerative.org](mailto:jenny@reallyregenerative.org)  
Dr Al Mathers  
[al@reallyregenerative.org](mailto:al@reallyregenerative.org)